



CORONA CR DIARY

RADIO KAMALVANI

90.4 CRS

Dr D P SINGH





BACKGROUND REPORT OF KV RADIO

Shekhawati Ki Shaan-O-Aavaaz, Kamalvani 90.4 CRS ka Aagaz

On Air - 22th Nov. 2012

Broadcasting Time - 10 hrs. per-day

Catchment Area

District HQ-02, Blocks-08, Villages-428, Population - 25 Lakhs App.

Types of Community

Farmer, Artisan, Laborer, Student, Army-persons, Business-persons etc.

Google App - KAMALVANI (24Hrs.)

Live App - Broadcast Myself

Station is run through mobilization of community





CHALLENGES OF CATCHMENT AREA

Non-acceptability Attitude
& Low Awareness level

01

02

Habit, Tradition & Belief
System

Lack of Proper
Information

03





ACTION PLAN



Coordination

- Local Public
- Health Worker
- Local Govt.



Motivation

- Local (*abroad/outside*) Person's messages
- Messages of Govt./Popular/Public Person
- Bhamashah for – Mask, Sanitizer, Food etc.



Use of Technology

- Village level What's app Group
- Broadcast App of KV Radio
- Phone-in program



Prevention

- Close observation (workers come from outside)
- Stop Social functions, Tash-patti, Lota-Party, Gossips, Needless walking etc.

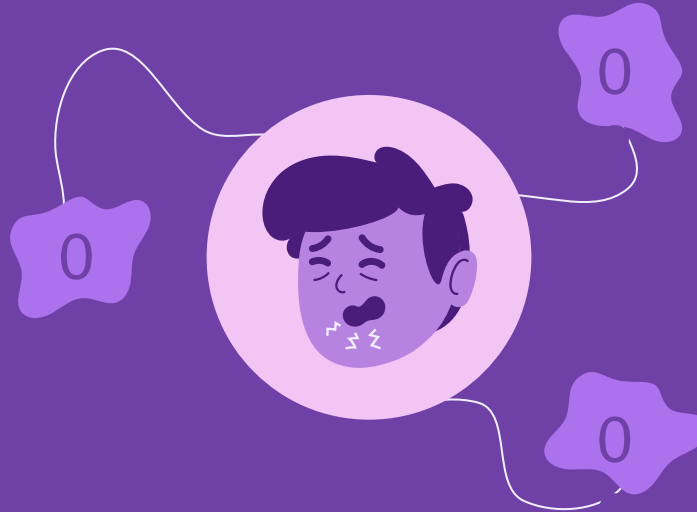


IMPACT OF CR KAMALVANI

STOP

Bad Habits

- Unnecessary Social Gathering
- Poor Health & Hygiene
- Tradition & Beliefs



THINK

Safe Life

- Positive Thoughts
- Life Style – Food/Drinks
- Govt. Instructions

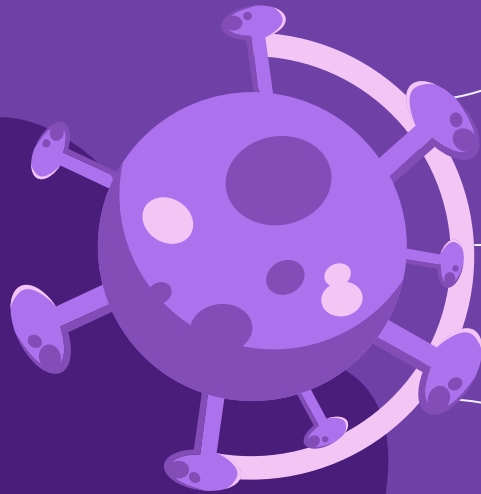
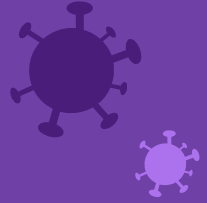
START

Good Practices

- Be Receptive for Positive thoughts
- Change life style accordingly
- Follow necessary Instructions



CONCLUSIONS



01

Keep Social Distancing

02

Wear Mask & Avail Senitizer

03

Stay at Home





A Picture Is Worth a Thousand Words





“थोड़ा सा अभ्यास बहुत सारे उपदेशों से
बेहतर है.”

—महात्मा गांधी



THANKS

any questions?

drdp91@gmail.com

kamalvanicrs@gmail.com

+91 900 100 5900

www.kamalnishtha.org

Google App - KAMALVANI

